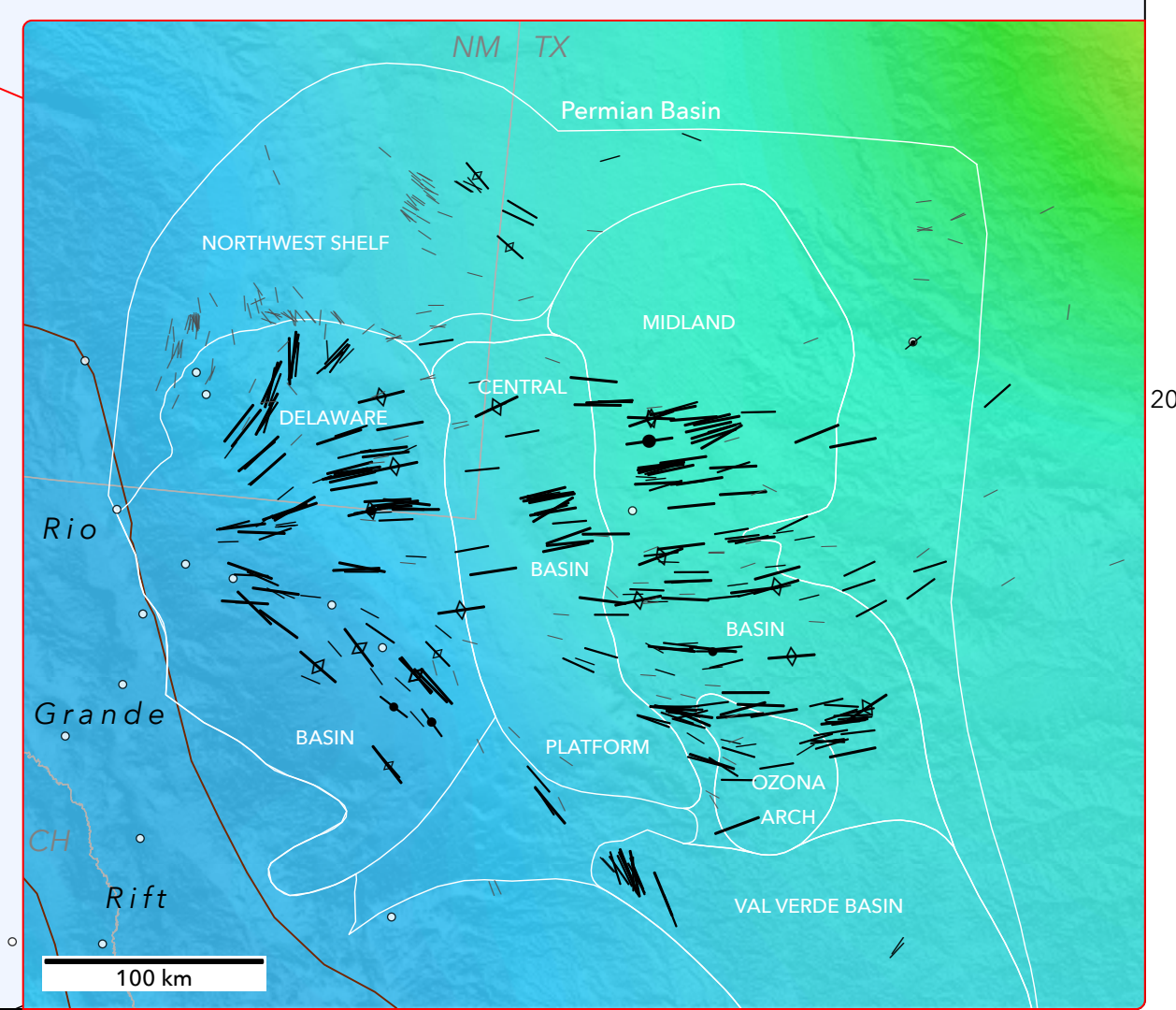
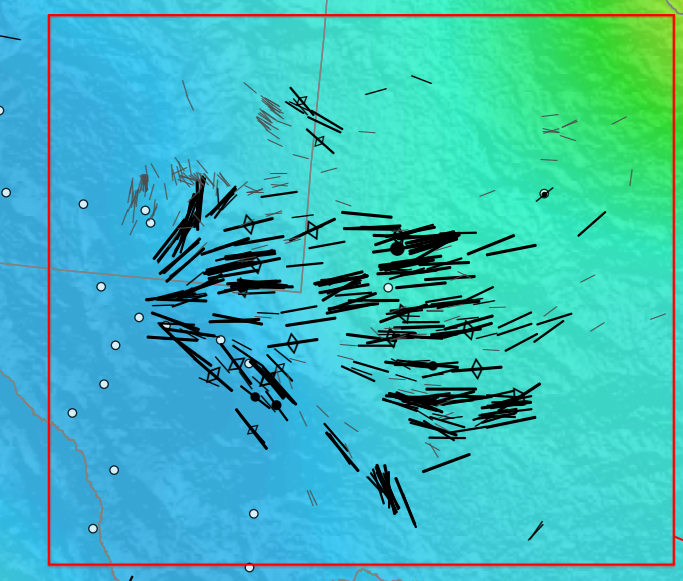
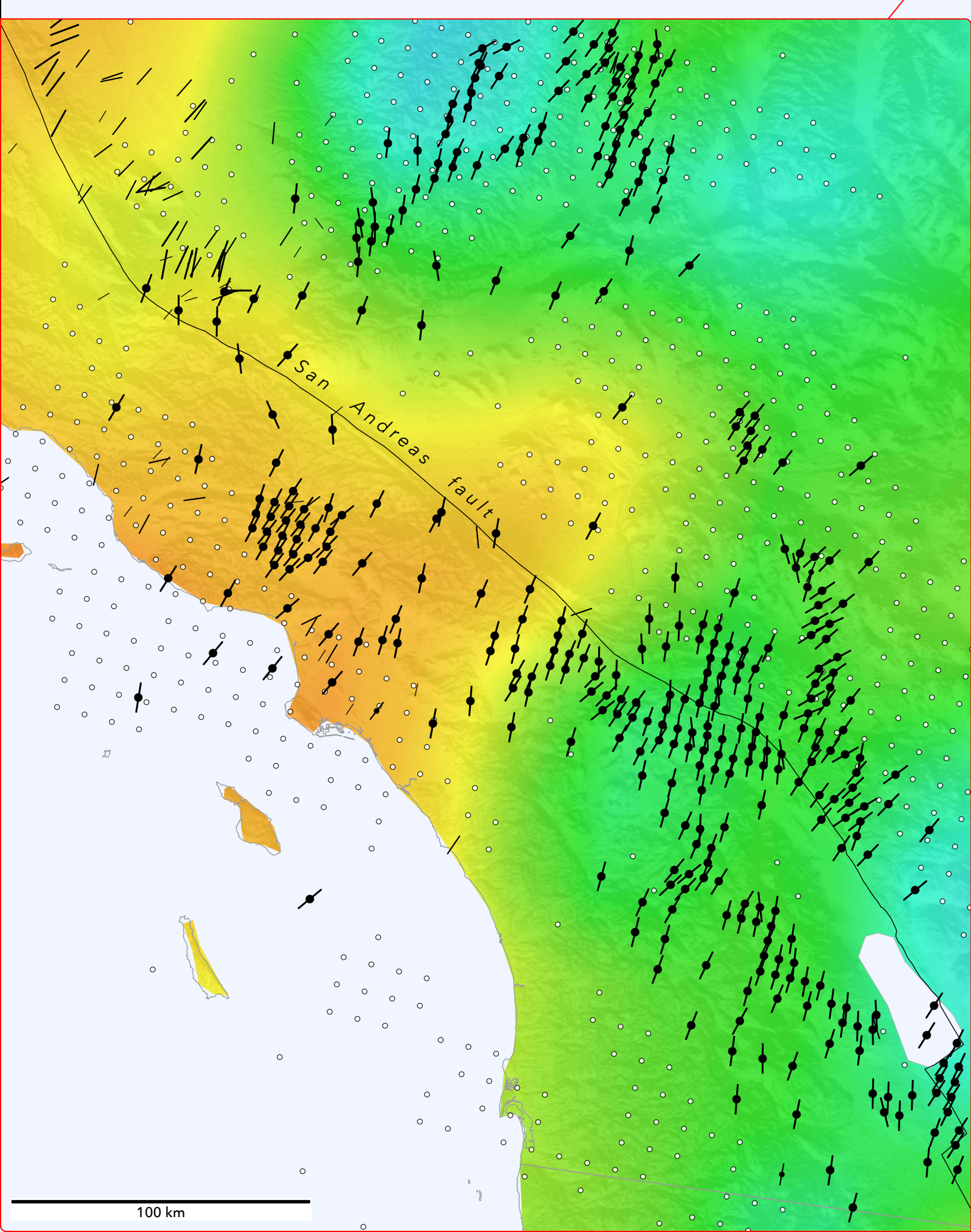


PLATE 1
 State of stress in North America
 NNR-MORVEL56 absolute plate motion (Argus et al., 2011)
 S_{max} orientation indicator:
 Focal mechanism stress inversion
 Aligned microseismic events
 A₁ control points:
 S_{max} orientation quality:
 A — B — C
 Relative stress magnitudes (A₁):
 0 0.5 1.0 1.5 2.0 2.5 3.0
 normal strike-slip reverse
 A₁ control points
 *See the thesis for complete citations and references to stress data sources.
 CITATION: Lund Sneek, Jens Erik, 2020. State of stress in North America: Seismicity, tectonics, and unconventional energy development [Ph.D. thesis]. Stanford University, 254 p.

Limit of Laurentide ice sheet (Ehlers et al., 2011)*

Salt margin (Pindell & Kennan, 2009)*



100 km 500 km

100 km